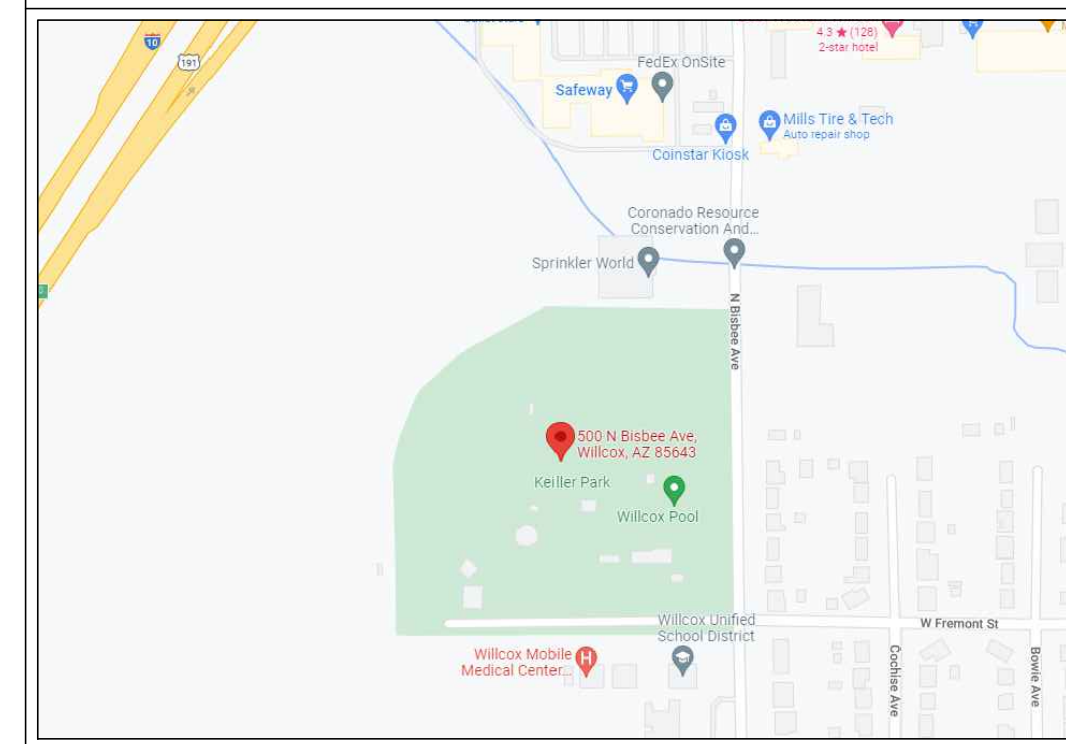
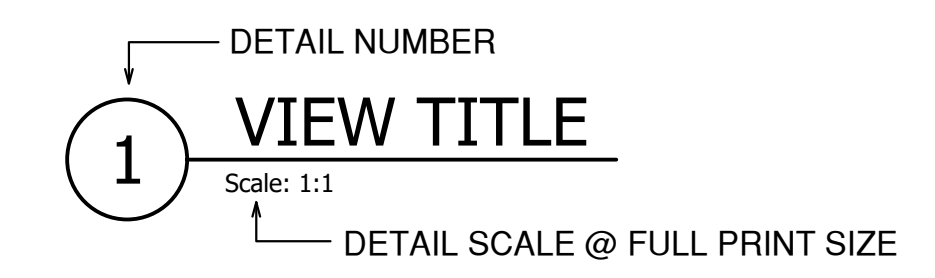


VICINITY MAP

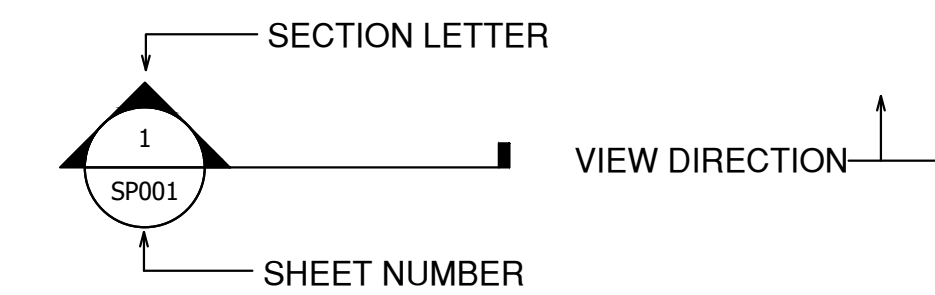


REFERENCE SYMBOL KEY

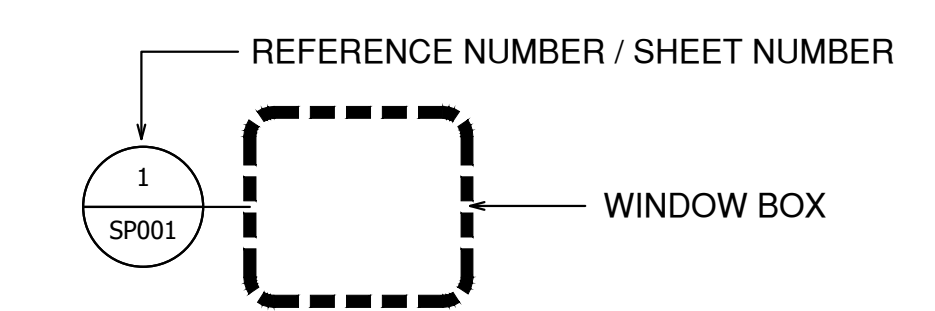
SHEET LOCATION:



SECTION REFERENCE:



DETAIL BLOCK REFERENCE:

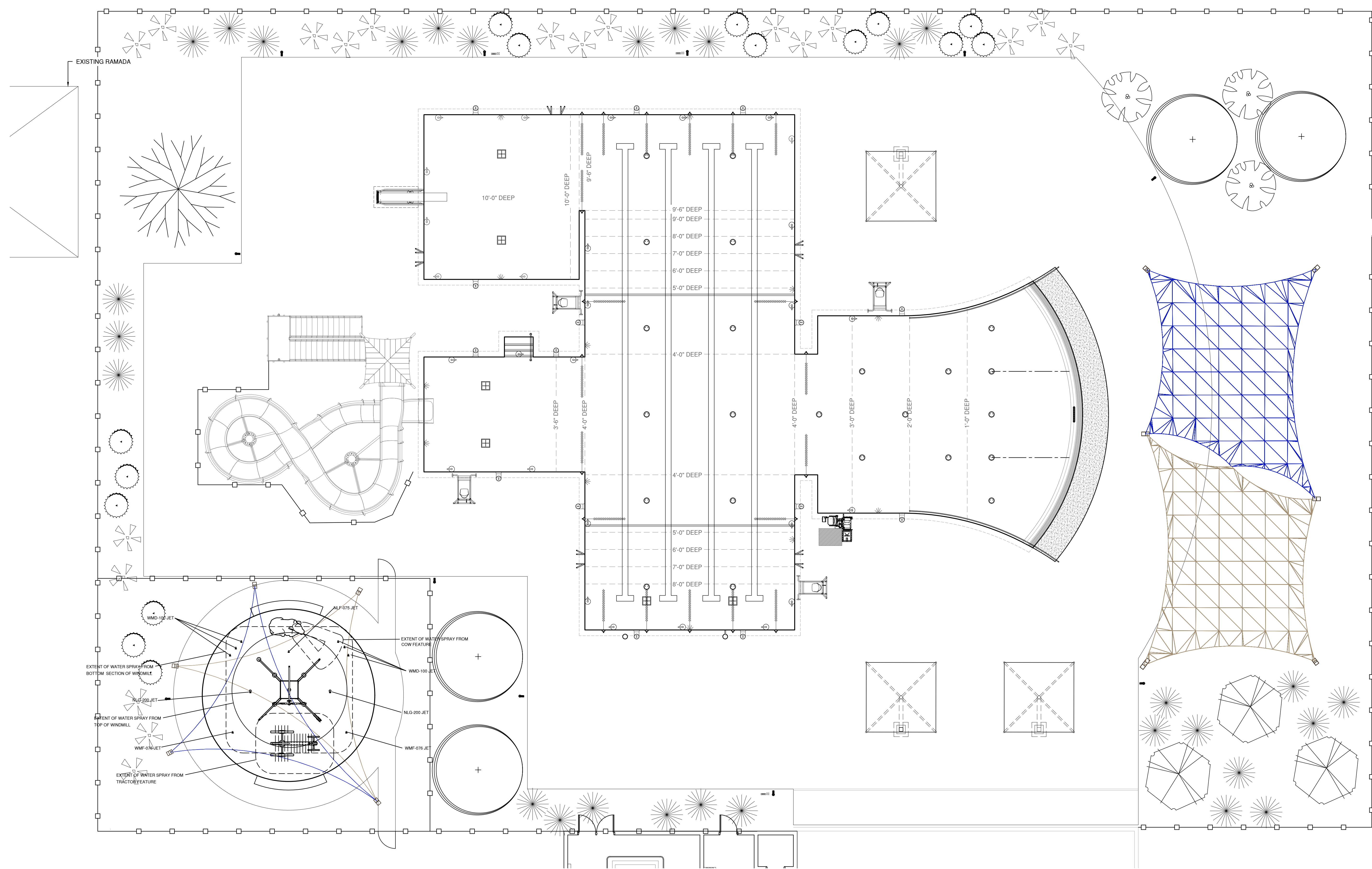


SYMBOL KEY

	MAIN DRAINS		EMERGENCY SHUT-OFF
	HANDRAIL		ACTIVATION BOLLARD
	DEPTH MARKERS		POWER PANEL LOCATION
	WALL INLET		OFFSET
	ADA TRANSFER LIFT W/ APPROACH		GFCI OUTLET
	LED LIGHT		JUNCTION BOX
	SKIMMER		WALL HYDRANT
	AUTOFILL		FLOW ARROW
	FLOOR INLET		MANUAL FILL
	WATER PROOFING		STRUCTURAL FOAM
	WATER		CONCRETE

SAFETY SIGNS & EQUIP.

- REQUIRED SAFETY SIGNS**
1. POOL RULES - CAUTION FOR YOUR SAFETY
 2. POOL HOURS ARE: AM TO PM
 3. SAFETY EQUIPMENT IS FOR EMERGENCY USE ONLY
 4. NO GLASS IS ALLOWED IN THE POOL AREA. DISPOSE OF TRASH PROPERLY.
 5. NO RUNNING, PUSHING, OR BOSTEROUS PLAY IN POOL AREA.
 6. NO SWIMMING DURING ELECTRICAL STORM
 7. NO JETS ALLOWED IN POOL AREA.
 8. PERSONS WITH CUTS, INFECTIONS, OR COMMUNICABLE DISEASE DO NOT USE POOL.
 9. SUNTAN OILS AND LOTIONS SHOULD BE REMOVED PRIOR TO USING POOL.
 10. AVOID SWIMMING ALONE.
 11. SWIMMERS SHOULD USE SHOWERS AND RESTROOMS PRIOR TO USING POOL.
 12. DIVING IS NOT ALLOWED.
- ADDITIONAL SIGNS FOR PROJECT**
13. KEEP OFF ADA LIFT - NOT A TOY
 14. IN CASE OF EMERGENCY DIAL 911 - (MINIMUM 4" HIGH NUMBERS) WITH LOCATION OF NEAREST EMERGENCY SERVICES & NAME AND ADDRESS OF THE POOL FACILITY
 15. WARNING NO LIFE GUARD ON DUTY (MINIMUM 4" HIGH LETTERS)
 16. ILLUSTRATED DIAGRAM OF ARTIFICIAL RESPIRATION AND CARDIOPULMONARY RESUSCITATION PROCEDURES (MINIMUM 1" HIGH LETTERS)
 17. NO DIVING
 18. EMERGENCY SHUT-OFF SWITCH
- POOL SAFETY EQUIPMENT: PRODUCT OF RECREONICS:**
19. SHEPHERDS CROOKS WITH 16 FT RIGID POLE - #12-237 QTY. 2
 20. RING BUOY 24 INCH, WHITE - #12-252 QTY. 2
 21. STAINLESS STEEL HOOD FOR RING BUOY - #12-250 QTY. 2
 22. RING BUOY 30 FOOT THROW LINE - #12-260 QTY. 2
 23. FIRST AID KIT MEDIUM - #12-244 QTY. 1
 24. POOL VACUUM & HOSE: PRODUCT OF RECREONICS, COMMERCIAL FLEX-A-VAC HEAD, MODEL #10-202, 24" INCH FLEX VACUUM HEAD WITH 1 1/2" INCH HOSE VACUUM HOSE, MODEL #10-412, SIZE: 1-1/2" X 36 FEET WITH SWIVEL END QTY. 1
 25. WATER TESTING KIT, RECREONICS #66-163, TAYLOR COMPLETE 2005 TEST KIT



1 CITY OF WILLCOX POOL & SPLASH PAD FACILITY SITE
Scale: 1/8"=1'

POOL & SPLASH
PAD SITE

CITY OF WILLCOX
500 N. BISBEE AVE
WILLCOX, AZ 85643

QUADESIGN
INTERNATIONAL
7534 N. LA CHOLLA BLVD.
TUCSON, ARIZONA 85741
WWW.QUADESIGN.NET

PREPARED BY:
AA & TS

PRELIMINARY

DRAWN BY:
JM, MN & CN
CHECKED BY:
AA & TS
DATE:
07/27/22
SCALE:
VARIES
DRAWING NAME:
CITY OF WILLCOX

SHEET
SP-002